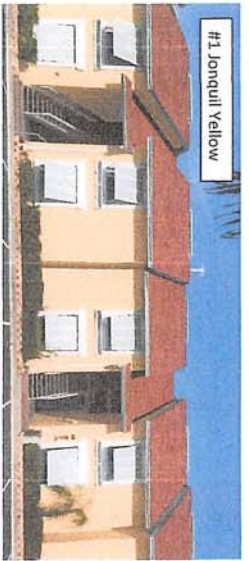


46, 48, 58, 63, 67, 72 + 74



#1 Lonquill Yellow



#2 Hibiscus

450, 54, 62, 66, 73 + options

47, 51, 55, 60, 65, 75 + >

< Laundry



#7 Vacation Island



#8 Orleans Blue

449, 52, 57, 61, 70 + 76



#5 Don Cesar

445, 53, 59, 64, 68, 71 + 82 Sunday

Approved

Thursday

May 26, 2016

Portwonder Bay Beach Condominiums

Scott Miller, Association Manager

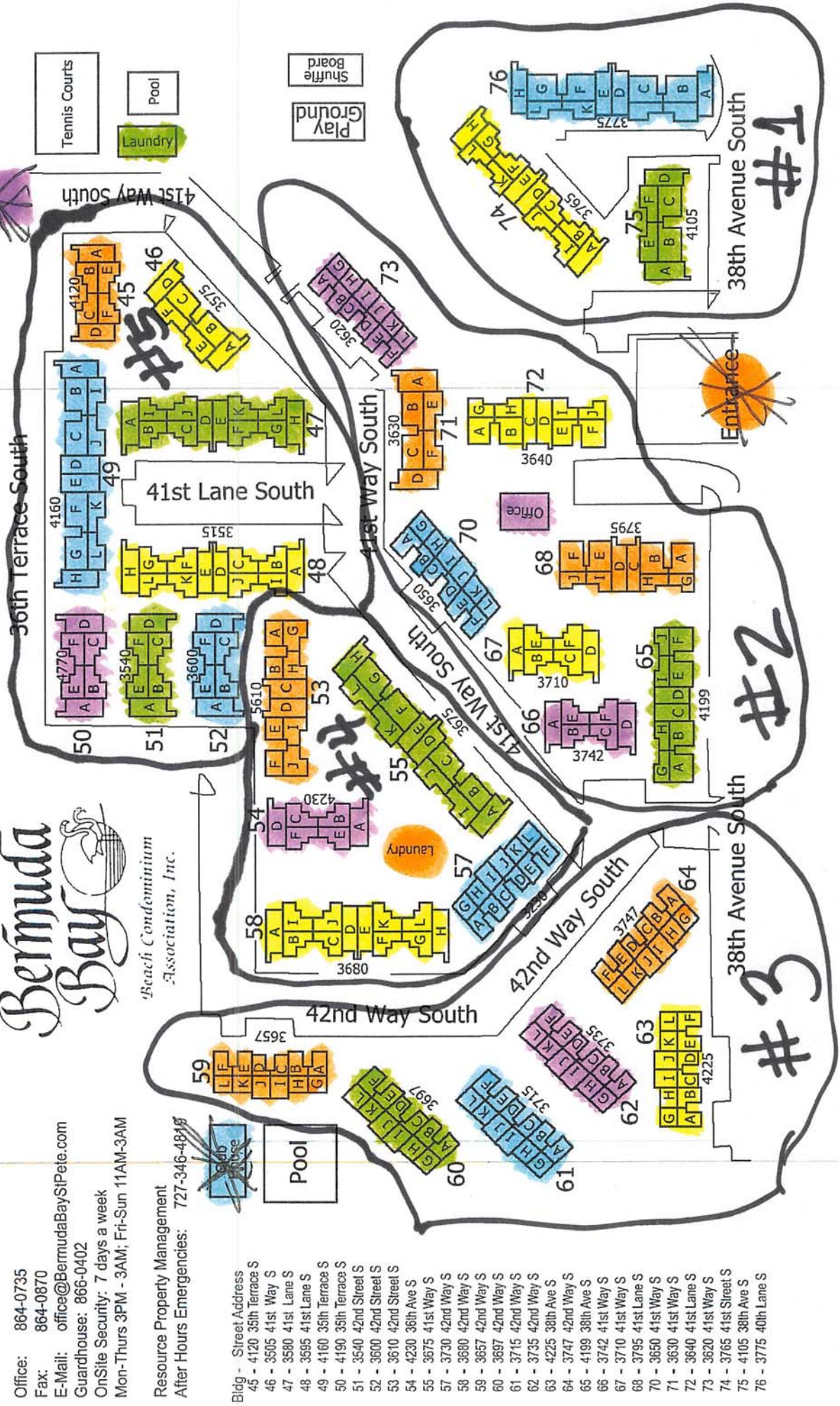
☺ = DON PINK
 😊 = Hibicus

Bermuda Bay

'Beach Condominium Association, Inc.

Office: 864-0735
 Fax: 864-0870
 E-Mail: office@BermudaBaySiPete.com
 Guardhouse: 866-0402
 OnSite Security: 7 days a week
 Mon-Thurs 3PM - 3AM; Fri-Sun 11AM-3AM

Resource Property Management
 After Hours Emergencies: 727-346-4848



- Bldg - Street Address
- 45 - 4120 35th Terrace S
- 46 - 3505 41st Way S
- 47 - 3580 41st Lane S
- 48 - 3595 41st Lane S
- 49 - 4160 35th Terrace S
- 50 - 4190 35th Terrace S
- 51 - 3540 42nd Street S
- 52 - 3600 42nd Street S
- 53 - 3610 42nd Street S
- 54 - 4230 38th Ave S
- 55 - 3675 41st Way S
- 57 - 3730 42nd Way S
- 58 - 3680 42nd Way S
- 59 - 3657 42nd Way S
- 60 - 3697 42nd Way S
- 61 - 3715 42nd Way S
- 62 - 3735 42nd Way S
- 63 - 4225 38th Ave S
- 64 - 3747 42nd Way S
- 65 - 4199 38th Ave S
- 66 - 3742 41st Way S
- 67 - 3710 41st Way S
- 68 - 3795 41st Lane S
- 70 - 3650 41st Way S
- 71 - 3630 41st Way S
- 72 - 3640 41st Lane S
- 73 - 3620 41st Way S
- 74 - 3765 41st Street S
- 75 - 4105 38th Ave S
- 76 - 3775 40th Lane S